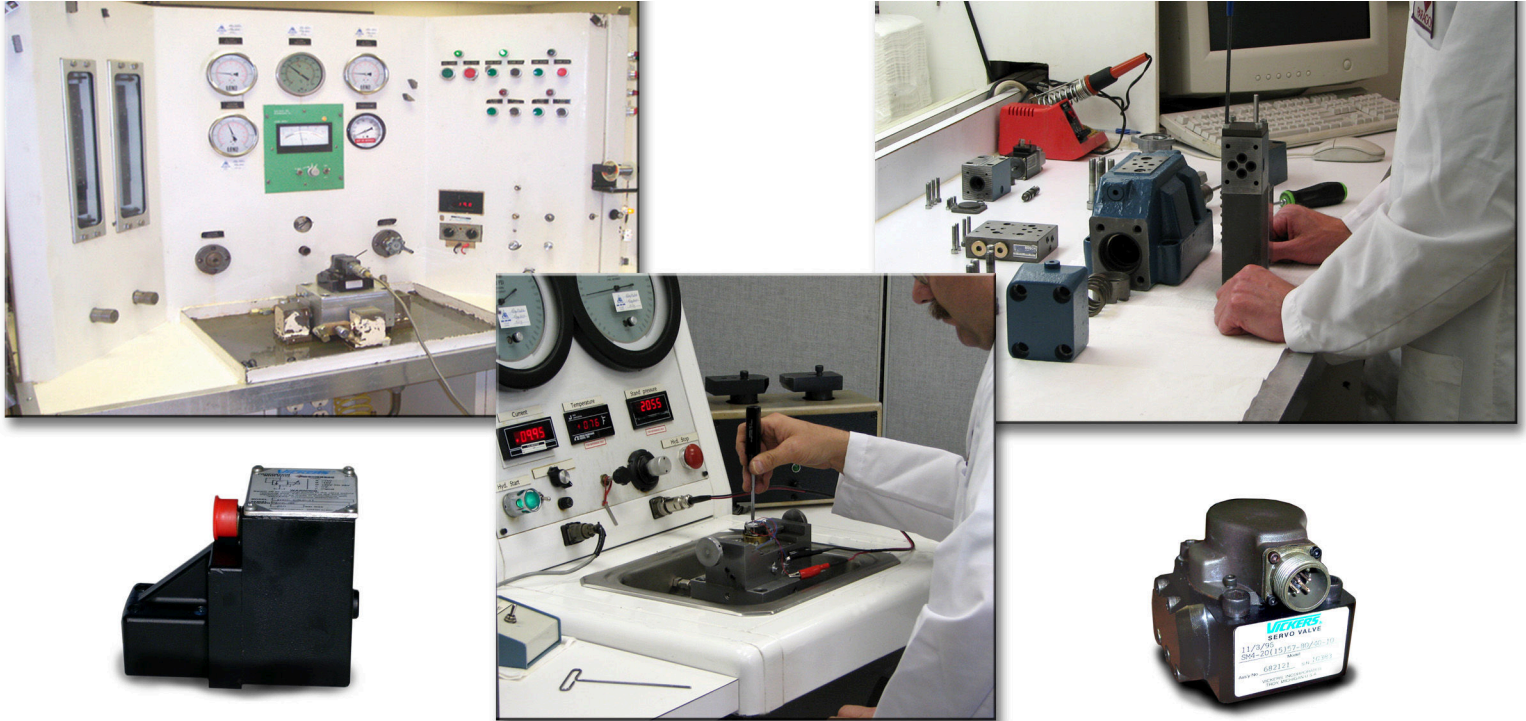
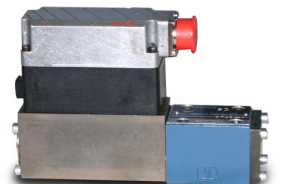
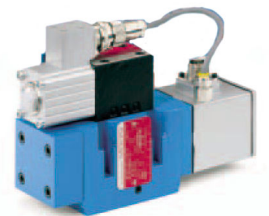
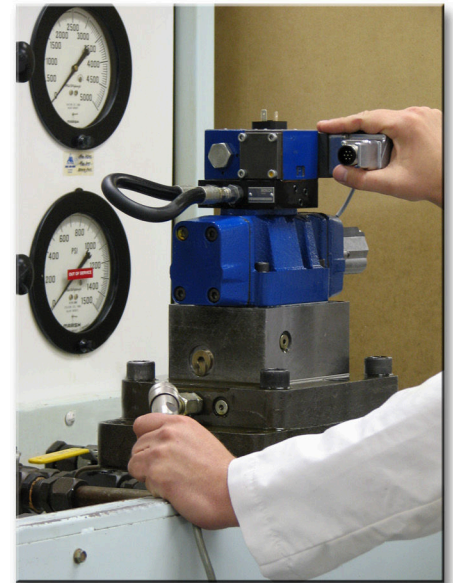


# SERVO VALVE REPAIR



## PROCEDURES FOR SERVO VALVE REPAIR

- Visual inspection and evaluation on test stand for initial comparison to manufacturer's specifications.
- Valve is disassembled.
- Every part is chemically cleaned with solvents.
- Torque motor is dismantled down to wires and magnets.
- All parts are inspected and checked to ensure they are within manufacturer's tolerances and specifications.
- Failed parts are replaced with original manufacturer components.
- Torque Motor is totally remanufactured.
- Each magnet is re-magnetized to full strength.
- All nozzles are adjusted.
- Feedback wire is checked for wear and performance.
- Motor is rewired and assembled with new Viton Seals.
- Torque motor is then tested and calibrated to manufacturer's specifications.
- Valve Body is inspected to ensure it is within manufacturer's tolerances.
- Body spool assembly is checked for wear.
- If needed the body and/or body spool assembly is replaced with new from the original manufacturer, assembled using new Viton seals and a new filter from the valve manufacturer.
- The torque motor and body are reassembled, tested to 100% of specifications for flow and pressure established by the manufacturer.
- Once tested to manufacturer's specifications, a test report and computer plot is included with the repair.

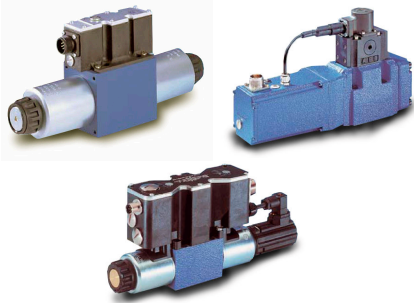


**PARAGON**  
technologies  
5775 Ten Mile Road  
Warren, MI 48091  
phone: (800) 229-5350  
fax: (800) 229-5375  
www.paragontech.com

**PARAGON**  
canada  
1100 South Service Rd #103  
Stoney Creek, ON, CN. L8E 0C5  
phone: (800) 567-3786  
fax: (800) 229-5375  
www.paragoncanada.ca

**PARAGON**  
atlantic  
2919 Interstate Street  
Charlotte, NC 28208  
phone: (800) 756-9150  
fax: (800) 229-5375  
www.paragonatlantic.com

**PARAGON**  
pacific  
82 Corporate Park Dr.  
Henderson, NV 89074  
phone: (800) 756-9160  
fax: (800) 229-5375  
www.paragonpacific.net



## REXROTH

4WS2EM10	4WRA
3DREP6	4WRAE
4WRDE	4WRE
4WRE10	4WREE
DBETR	4WREDE
FE Series	3DREP
4WRK	3DREE
4WRKE 10-35	3DS2EH
Series	3DSE2EH
4WRTE	



## PEGASUS

120	132	162
121	140	180
122	142	1160
130	160	1282
131	161	

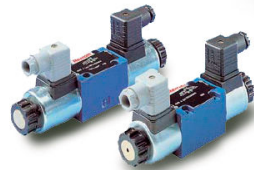


## ATCHLEY

205	211	230
206	214	231
207	215	240
208	218	241
209	225	242

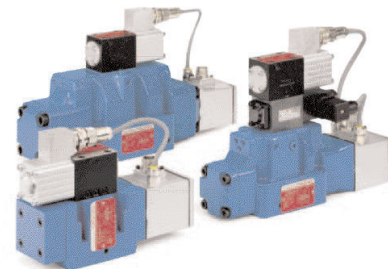
## DYNAMIC

1	10	15
5	12	25



## BOSCH

(Directional Control)	(Pressure Control)
NG6	NG6
NG10	(Throttle Valve)
NG16	NG6
NG25	NG10
NG32	

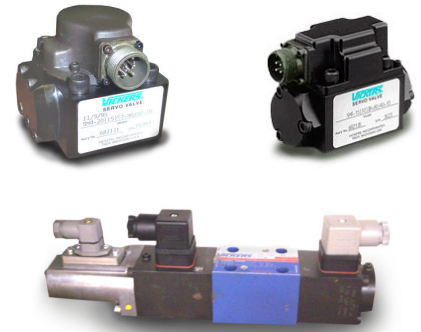


## MOOG

62-1xx	656
62-3xx	660 - 665
631-xxx	D761
72-xxx	D769-xxx
73-xxx	79-1xx
76-xxx	79-2xx
A076-xxx	D079
760-xxx	765
77-xxx	88
78-xxx	631
79-30x	691
641	D791
642	D792
643	
644	Servoactuators
645	A085
650	856
651	853
652	

## ABEX

410	415	425	450
-----	-----	-----	-----

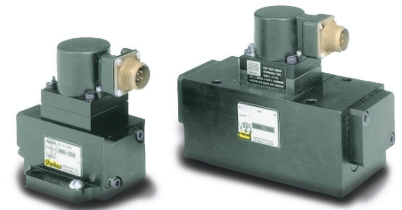


## VICKERS

SM4-10	(Pressure Control)
SM4-15	EHST
SM4-20	CGE-02
SM4-40	CGE-06
	CGE-10

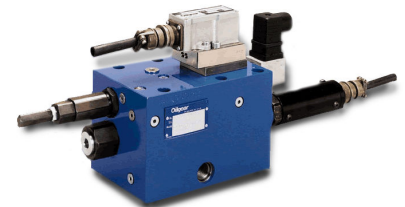
## SUNSTRAND

MCV 101	MCV 105
MCV 102A	MCV 110
MCV 103	MCV 116
MCV 104	



## PARKER

BD15	DY
BD30	EHD
D111	PC1
D1	PC2
D3	PE1
D4	PE2
D8	PE3
D9	PH
DW	TDA



## OILGEAR

VSC4-R03	VSC4-R05
VSC4-R04	VSC4-R07

**Contact:** Call or email the Customer Service office nearest you 24 hours a day. With a few simple questions we can begin the process of completing your repair or replacement. You can also fill out an on-line form on any of our web sites that is forwarded directly to our Customer Service department. If we can exchange controls a quote is generated immediately.

**Ship:** Send the repair in for service, or if a local sales office is nearby it may be quicker for us to come and pick up the item. If not, we can help you find the best method to get the repair into the right Paragon facility.

**Evaluation:** Once logged into our system with a "lifetime" ID number, your product moves to the appropriate department for initial evaluation and quoting of the repair.

**Quote/Approval:** A cost quote for the repair is generated instantly and sent to you via the Internet or by fax. You can approve the repair by email, fax, or a call to customer service along with your company purchase order number or credit card.

**Repair/Return:** Once your product is repaired and tested, it is foam packaged and/or static bagged and returned via the method you designate, expedited or regular ground.

**Invoicing:** If credit is established, the invoice is generated the following day or your company credit card is billed. Open credit terms are net 30 with 1% discount at 10 days.